

# DIGITAL AUGMENTED ENGINEERING AND DIGITAL TRANSFORMATION AS ENABLER OF INDUSTRIAL PERFORMANCE



DIGITAL TECHNOLOGY IS A KEY LEVER FOR ACCELERATING AND OPTIMISING THE PERFORMANCE OF COMPLEX PROJECTS, WHOSE CHALLENGES INCLUDE:

**Increasingly COMPLEX REQUIREMENTS**

**Exponential volumes of data TO PROCESS and STRUCTURE**

**Upgrading PHYSICAL and CYBER SECURITY standards**

**A growing number of STAKEHOLDERS**

**Strong ECONOMIC and ENVIRONMENTAL constraints**

**A strong need for TRAINING, KNOWLEDGE CAPITALISATION and SHARING**

## OUR DUAL POSITIONING IN DIGITAL

Prioritising data valorisation and end-to-end approach to projects, Assystem's digital offering benefits from a dual positioning:

**AUGMENTED ENGINEERING**



**DIGITAL TRANSFORMATION**

## OUR AUGMENTED ENGINEERING EXPERTISE

Thanks to our industrial business process experience and digital expertise, we optimise our clients' project performance across their entire lifecycle



DESIGN



CONSTRUCTION



COMMISSIONING



OPERATION



DECOMMISSIONING

TECHNOLOGIES & EXPERTISE

System engineering / MBSE / PLM / Digital twin / BIM / CAD

PPM / IMS

Industrial information systems / Hypervision / IoT

EAM / CMMS / FSM

Data platforms / Artificial Intelligence

Move to cloud

Cybersecurity

## OUR DIGITAL TRANSFORMATION OFFERS

We support our clients' digital transformation from the framing and design phases through development and integration, all the way to operational phases



FRAME



DESIGN



BUILD



DEPLOY



RUN/MAINTAIN



Urbanisation & Design



Application development & integration



Maintenance & TPM



Data management, business intelligence & analytics



Project management



Change management



PROCESS



TOOLS



DATA



PEOPLE

**IN ORDER TO MEET THE SPECIFIC CHALLENGES OF ENGINEERING, CONSTRUCTION AND PROJECT MANAGEMENT ASSYSTEM HAS DEVELOPED TAILOR-MADE DIGITAL SOLUTIONS:**



**Optimizio:**

Optimise and improve the reliability of complex schedules, to efficiently manage resources and constraints to support decision-making



**DeepFinder:**

Search and retrieve information from all types of structured or unstructured documents



**DeepREXT:**

Automatically extract, classify and streamline requirements from a document database



**SiteEXP:**

Streamline mobility and digitalise business forms at manufacturing facilities



**CurieLM:**

Generate instructions and specifications specific to the technical challenges using a customised, optimised LLM\*



**Emoby:**

Support HR teams in sourcing and mapping skills thanks to a rules engine



**DeepCompliance:**

Assist engineers in producing deliverables using a quality control and writing assistance solution



**SmartRisk Mapper:**

Anticipate, structure and optimise the risk management of your projects using Artificial Intelligence

## THANKS TO OUR DISTINCTIVE POSITIONING

### OUR INDUSTRIAL CLIENTS BENEFIT FROM:



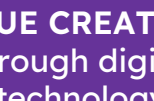
**VALUE CREATION** through digital technology



**TECHNOLOGICAL INDEPENDENCE**, allowing us to work with all publishers and platforms on the market



**THE ADAPTABILITY and MODULARITY** of our offerings, **TAILORED TO THE NEEDS** of the client



**DATA CONTINUITY** throughout the transformation cycle

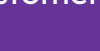


**UNDERSTANDING** of uses and **INTEGRATION** of customer solutions



The involvement and **COMMITMENT OF BUSINESS TEAMS** from start to finish

SWITCH ON



ENGINEERING & DIGITAL FOR ENERGY TRANSITION